



The huts make winter a little more comfortable in the backcountry.

Location:

Bartholf Creek valley, 1 1/2 miles north of the Bomber Glacier (8 miles from the Reed Lakes trailhead). Elevation: 3900 feet. Built: 1990.

Access:

Via Reed Lakes:

From the end of Reed Lakes trail, ascend northeast toward the northwest ridge of Lynx Peak. Cross over the ridge at its lowest point (Bomber Pass), N 61 51.274, W 149 07.995, to the Bomber Glacier. (This slope ascending to the pass is prone to avalanches during periods of unstable snowpack.) Descend the glacier north-northeast towards Parliamint. The metallic siding of the Bomber Hut may be visible in the valley below.

Get off the ice and descend boulders and tundra to Bartholf Creek. After crossing the creek on boulders, find the Bomber Hut in about 100 yards on a tundra bench, overlooking a lake to the west. Hut: N 61 52.757, W 149 08.122.

Via Snowbird Glacier:

This option may or may not be safer from avalanches than going from Reed Lakes. Slope angle is slightly less, but still well within the range known to be hazardous. Be careful during the winter.

Take the trail going to Reed Lakes, but before crossing Glacier Creek at the end of the dirt road, find a trail to the left. Ascend this steep trail, going northwest for about 1200 feet to the Snowbird Mine, where it ends. Continue past the ruins and follow the creek a short ways upvalley.

Begin to ascend to the left slightly over scree and boulders (and at times on trail) as you follow Glacier Creek past Didilkama. Eventually climb to the pass between Didilkama and Lower Tower at upper Snowbird Glacier. Descend the glacier.

As you descend you may notice a private cabin on the right, about one mile from the pass. It is dome-shaped and silver-colored. Permission is needed to use it, but it is not locked. Continue down the glacier to its terminus and follow the outlet creek which swings east towards a lake.

You may follow the creek, which descends partly as waterfalls to the lake, or follow the ridge just to the left. In either case, continue past the lake and follow the Bartholf Creek drainage directly north. About 1 1/2 miles from the lake turn right to ascend an eastern branch of Bartholf. The Bomber Hut is visible far in the distance as you make this turn (look for its metal siding).

Follow the creek on either side (south side may be easier) through occasional light brush for about 2 miles. The Bomber Hut is on the north side of the creek on a tundra bench, overlooking a lake to the west. If you go too far you will reach one of several glaciers feeding the creek. Simply turn around and look harder for the hut. Hut: N 61 52.757, W 149 08.122.

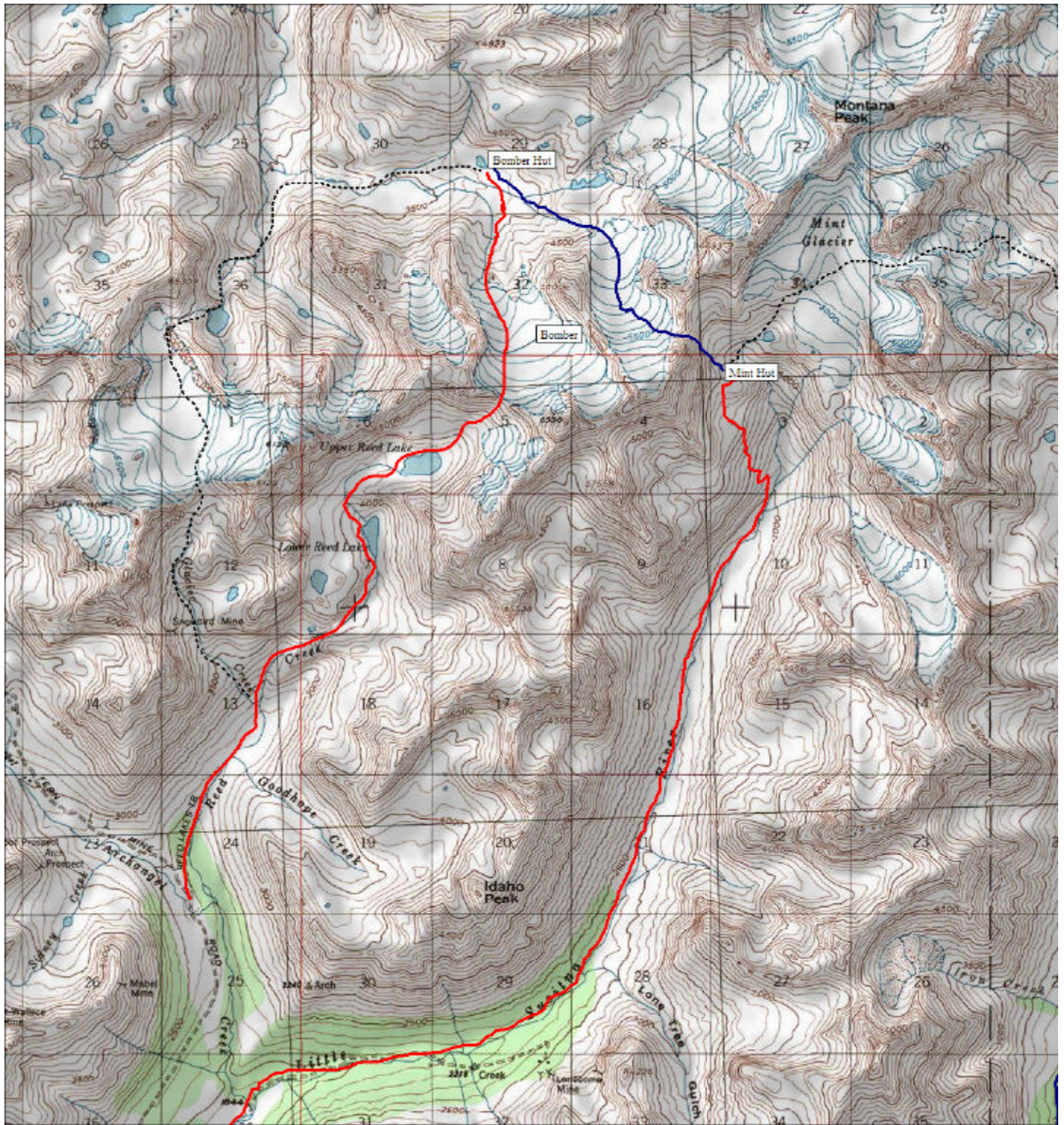
Water: In summer, look about 50 yards slightly left of the front door among boulders, or use any of a number of creeks in the area.

Outhouse: about 20 yards from the front door.

Accommodations:

sleeps 7-9, no heat, but it is insulated, 2-burner Coleman cookstove, lantern, no beds, no radio please bring your own fuel please carry out all your trash

LEAVE NO FOOD. BEARS FREQUENT THE AREA.



Map created with TOPO! © 2003 National Geographic (www.nationalgeographic.com/topo)

## **Policy: Commercial Use of MCA Huts**

**Approved: MCA Board, August 2002, published in SCREE September 2002.**

### **Background**

Prior to the early 1990's there was minimal commercial operator use of the eight MCA backcountry huts. However, over the past several years, competing use between both private and commercial users has increased markedly. Overall use of the MCA huts is expected to rise for several reasons. First, MCA membership has increased from 400 members in 1995 to approximately 600 members.. Secondly, information on how to access the MCA huts has been published in at least one book ("How to Rent A Public Cabin in Southcentral Alaska, A. Romano-Lax, 1999), as well as Outside Magazine (a 2002 issue).

Much of this competition has centered around the five MCA huts whose land is leased to the MCA by the Alaska Department of Natural Resources (AKDNR) through their section .810(b-d) Public and Charitable lease program. These five huts are the Scandinavia Hut and Bock's Den on the Matanuska Glacier and the Mint Glacier Hut, the Bomber Hut and the Dnigi Hut in the Talkeetna Mountains. The Scandinavia Hut and the Mint Hut receive the highest concentration of users, both private and public. Attachment A is a letter to the MCA from the AKDNR dated March 18, 2002 which **strictly prohibits** commercial use of these five huts under our .810(b-d) lease agreement. This letter also confirms it is the responsibility of the MCA to insure compliance with the terms of the lease. These huts are open to members of the public upon obtaining membership to the MCA.

The three remaining MCA huts are located in the Chugach State Park (CSP) along the Eklutna Traverse. They are Pichler's Perch, Hans' Hut and Rosie's Roost. Increasing private and commercial use is also impacting these huts. The CSP has a draft policy regarding the three Eklutna Traverse Huts in which they state, "In the absence of a property interest being held by MCA, it is the state's position that the huts are publicly owned and are to be managed as public facilities in Chugach State Park. MCA is encouraged to continue to conduct maintenance work on the huts. However, as publicly-owned structures in the park, the state is responsible and liable for these structures." The CSP does not prohibit commercial use of these three MCA huts, although commercial users must obtain a commercial use permit to operate in the CSP.

In light of growing use of the MCA Huts, the MCA has established the following policy regarding the use of the huts by commercial (for profit) companies:

### **Policy**

1. All hut users are strongly encouraged to join the MCA to support maintenance of these structures.
2. The Hut Committee shall contact all commercial operators (guides, outfitters, etc.) known to be using the huts and inform them of hut rules, this policy, and membership applications. Specific reference will be provided to the March 18, 2002 letter from the Alaska Department of Natural Resources stating that commercial use of MCA huts is prohibited at the 5 huts for which MCA has a lease with the State (Mint/Rainery, Bomber, Dnigi, Scandinavian, and Bock's).
3. The Commercial Use of Huts Policy will be posted at all MCA huts
4. Any conflicts between MCA members and commercially operated groups shall be brought to the attention of the Hut Committee Chairperson, who will relay this to the MCA Board.
5. The Hut Committee Chairperson shall contact the commercial operator regarding all conflicts.
6. Conflicts occurring at Eklutna Traverse Huts which are not resolved between the Hut Committee Chairperson and the commercial operator shall be reported to the Chugach State Park.

**Additional Policy for huts under Alaska Department of Natural Resources Jurisdiction:**

1. Signs prohibiting commercial use will be posted at each of the five MCA huts located on Alaska Department of Natural Resources (AKDNR) land: Scandinavia Hut, Bock's Den, Mint (Rainery) Hut, Dnigi Hut and Bomber Hut. A copy of the sign is included in Attachment B. A copy of the March 18, 2002 AKDNR letter will also be posted at the five huts.
2. The Hut Committee Chairperson shall contact the commercial operator regarding reported commercial use of the AKDNR huts to remind them of this policy and request that they discontinue use of these huts.
3. The Hut Committee Chairperson shall contact the Alaska Department of Natural Resources to report any documented commercial use of MCA huts under lease with AKDNR-