



Location:

Little Susitna River valley, about 9 miles from the Motherlode Roadhouse (1/2 mile from the Mint Glacier). Elevation: 4350 feet. Built: 1971.

Access:

Via Little Susitna:

From the trailhead parking lot for the Goldmint Trail, follow the trail up the valley for about 8 miles. Ascend the slope to the left, just before a rocky knob, and gain about 1300 feet. Ascend left around the knob, through a slight pass and drop into a small valley. Turn right, and shortly find the Mint Hut on the right, above the creek, on a bench overlooking Little Susitna valley.

In summer it is possible to more directly reach the hut by going right, around the knob along a narrow bench. This takes one above steep cliffs, and deserves caution, especially if wet. Waypoints:

N 61 47.566, W 149 07.614  
N 61 49.841, W 149 05.495  
N 61 51.214, W 149 04.516  
N 61 51.288, W 149 04.778  
N 61 51.406, W 149 04.786 the hut

Note that if you go to the very end of the Little Susitna drainage, you will encounter steeper slopes. While the hut may still be reached, these slopes are considered dangerous in unstable snow.

Via Penny Royal Glacier:

From the end of Reed Lakes trail, ascend northeast toward the northwest ridge of Lynx Peak. Cross over the ridge at its lowest point (Bomber Pass) to the Bomber Glacier. (This slope ascending to the pass is prone to avalanches during periods of unstable snowpack.) Cross the glacier going east-northeast, past the bomber wreckage. Climb through either of two low points in the next ridge and cross over to the Penny Royal Glacier.

Cross the Penny Royal going east, and pass through the low point in the next ridge between Tenemint and Hunchback Spire. This is Back Door Gap, at 5650 feet, N 61 51.734, W 149 05.761. Melting ice has made this pass a bit more challenging, be careful. From the gap, drop down scree and boulders to the small valley below. (The descent from the gap is prone to avalanches if the snowpack is unstable.) Follow the creek a short ways down valley and look to the right for the hut.

The Penny Royal Glacier and Back Door Gap can also be reached from the Bomber Hut, located northwest of the Penny Royal. Easily ascend the glacier, past Parliamint and up to the gap, which is the lowest point in the ridgeline above the glacier.

Via Moose Creek:

From Moose Creek headwaters, climb up from the creek, through boulder fields to the moraine which is below Grizzly Pass. Keep climbing, and reach the crevasse-free glacier below the pass, and then through the pass to the Mint Glacier. This is not without crevasses at first, so be wary. Keep right, and drop to the main glacier where the going is easy. Soon, run out of ice and then descend to the right side of a lake. Skirt the lake and find a path along a ridge which will take you down to the meadow near the hut. It sits up against the small knob across from the meadow. From the Dnigi Hut, this trip takes all day.

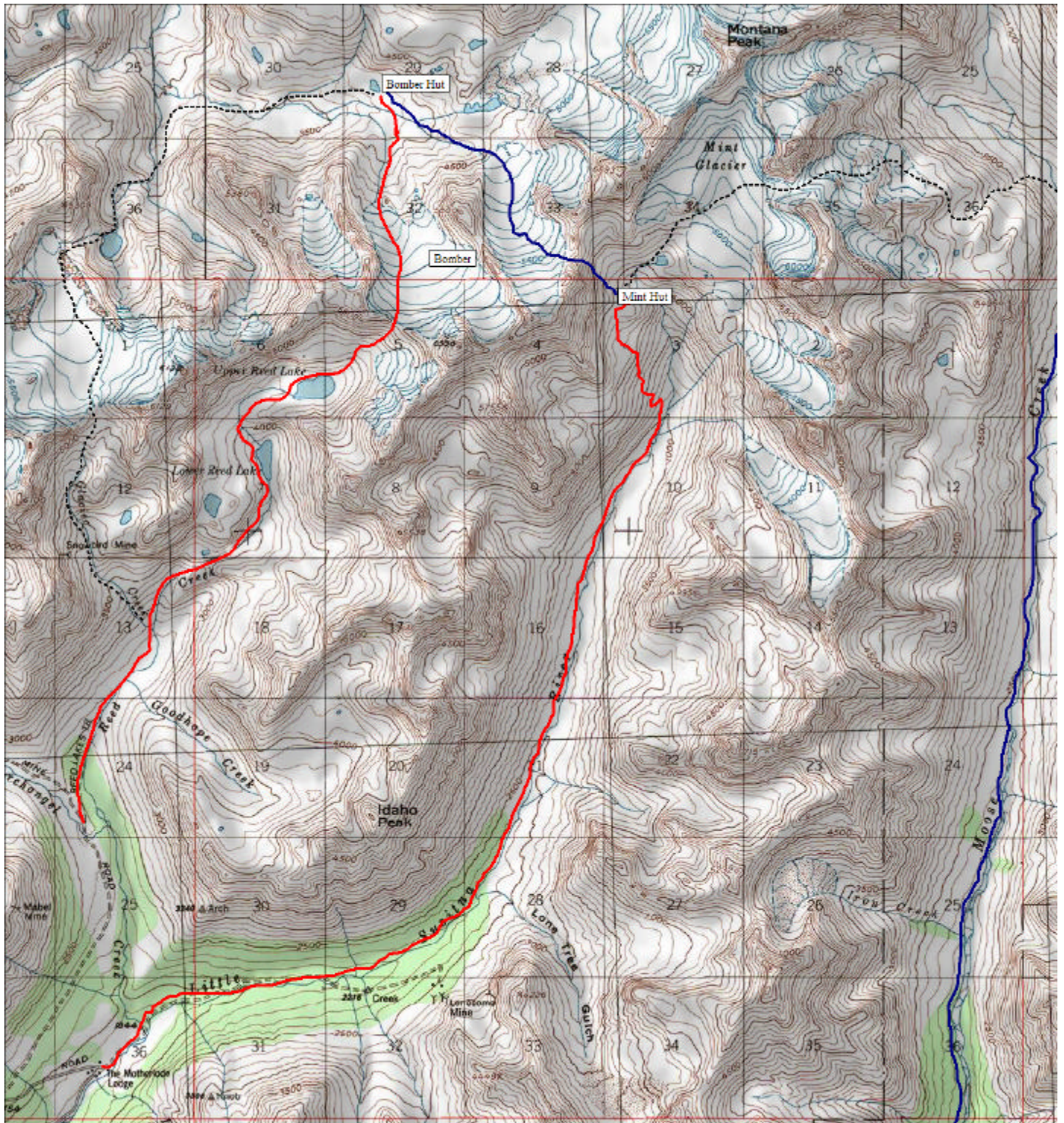
Water: In summer, water is easily found in the creek north of the hut.

Outhouse: about 20 yards south of the hut.

Accommodations:

sleeps 8-10, no heat, but it is insulated, 2-burner Coleman cookstove, lantern, no beds, no radio bring your own fuel .. carry out all your trash

LEAVE NO FOOD. BEARS FREQUENT THE AREA.



Map created with TOPO! © 2003 National Geographic (www.nationalgeographic.com/topo)

## **Policy: Commercial Use of MCA Huts**

**Approved: MCA Board, August 2002, published in SCREE September 2002.**

### **Background**

Prior to the early 1990's there was minimal commercial operator use of the eight MCA backcountry huts. However, over the past several years, competing use between both private and commercial users has increased markedly. Overall use of the MCA huts is expected to rise for several reasons. First, MCA membership has increased from 400 members in 1995 to approximately 600 members.. Secondly, information on how to access the MCA huts has been published in at least one book ("How to Rent A Public Cabin in Southcentral Alaska, A. Romano-Lax, 1999), as well as Outside Magazine (a 2002 issue).

Much of this competition has centered around the five MCA huts whose land is leased to the MCA by the Alaska Department of Natural Resources (AKDNR) through their section .810(b-d) Public and Charitable lease program. These five huts are the Scandinavia Hut and Bock's Den on the Matanuska Glacier and the Mint Glacier Hut, the Bomber Hut and the Dnigi Hut in the Talkeetna Mountains. The Scandinavia Hut and the Mint Hut receive the highest concentration of users, both private and public. Attachment A is a letter to the MCA from the AKDNR dated March 18, 2002 which **strictly prohibits** commercial use of these five huts under our .810(b-d) lease agreement. This letter also confirms it is the responsibility of the MCA to insure compliance with the terms of the lease. These huts are open to members of the public upon obtaining membership to the MCA.

The three remaining MCA huts are located in the Chugach State Park (CSP) along the Eklutna Traverse. They are Pichler's Perch, Hans' Hut and Rosie's Roost. Increasing private and commercial use is also impacting these huts. The CSP has a draft policy regarding the three Eklutna Traverse Huts in which they state, "In the absence of a property interest being held by MCA, it is the state's position that the huts are publicly owned and are to be managed as public facilities in Chugach State Park. MCA is encouraged to continue to conduct maintenance work on the huts. However, as publicly-owned structures in the park, the state is responsible and liable for these structures." The CSP does not prohibit commercial use of these three MCA huts, although commercial users must obtain a commercial use permit to operate in the CSP.

In light of growing use of the MCA Huts, the MCA has established the following policy regarding the use of the huts by commercial (for profit) companies:

### **Policy**

1. All hut users are strongly encouraged to join the MCA to support maintenance of these structures.
2. The Hut Committee shall contact all commercial operators (guides, outfitters, etc.) known to be using the huts and inform them of hut rules, this policy, and membership applications. Specific reference will be provided to the March 18, 2002 letter from the Alaska Department of Natural Resources stating that commercial use of MCA huts is prohibited at the 5 huts for which MCA has a lease with the State (Mint/Rainery, Bomber, Dnigi, Scandinavian, and Bock's).
3. The Commercial Use of Huts Policy will be posted at all MCA huts
4. Any conflicts between MCA members and commercially operated groups shall be brought to the attention of the Hut Committee Chairperson, who will relay this to the MCA Board.
5. The Hut Committee Chairperson shall contact the commercial operator regarding all conflicts.
6. Conflicts occurring at Eklutna Traverse Huts which are not resolved between the Hut Committee Chairperson and the commercial operator shall be reported to the Chugach State Park.

**Additional Policy for huts under Alaska Department of Natural Resources Jurisdiction:**

1. Signs prohibiting commercial use will be posted at each of the five MCA huts located on Alaska Department of Natural Resources (AKDNR) land: Scandinavia Hut, Bock's Den, Mint (Rainery) Hut, Dnigi Hut and Bomber Hut. A copy of the sign is included in Attachment B. A copy of the March 18, 2002 AKDNR letter will also be posted at the five huts.
2. The Hut Committee Chairperson shall contact the commercial operator regarding reported commercial use of the AKDNR huts to remind them of this policy and request that they discontinue use of these huts.
3. The Hut Committee Chairperson shall contact the Alaska Department of Natural Resources to report any documented commercial use of MCA huts under lease with AKDNR-