



MOUNTAINEERING CLUB OF ALASKA

BOX 2037

ANCHORAGE, ALASKA 99510

JANUARY 1987

Volume 30, Issue 01

### JANUARY MEETING

The meeting will be held Wednesday, January 21st at 7:30 pm at the Pioneer Schoolhouse, 3rd & Eagle Streets, Anchorage. After the business meeting, Becky Voris and Melan Shea will show slides of a winter trip from the Susitna River to Paxson.

### MINUTES FOR THE DECEMBER MEETING

The meeting was held December 17th at the Loussac Library, and called to order by President Mark Findlay at 7:40 pm. The reading of the minutes for November was waived.

### TREASURER'S REPORT

\$ 197.37	- Petty Cash
1013.75	- Checking Account
<u>3,357.50</u>	- Money Market
\$4,568.62	- Total MCA Monies

We are currently accepting membership dues for 1987. It is \$10 for an individual and \$15 for a family. Dues can be mailed into the club with a self-addressed, stamped envelope (if you wish your card to be mailed to you.) See address on back page.

Members were reminded that 1986 ended the last chance to get tax credit for donating books, gear, etc. to the club.

### I. COMMITTEE REPORTS

#### A. Outhouse Committee

Willy Hersman announced that the outhouse for the Mint Hut will be taken up on January 2,3,4. (Snow conditions permitting.) Anyone interested in accompanying the outhouse will need skis, skins and a sled.

B. Library Committee

New shelves will be built soon and help is needed to organize the expanded library. Contact Kathy Burke if you are interested in helping. 346-2841.

C. Board Meeting

The following topics were discussed:

1. Tax exempt status
2. Liability insurance
3. A subcommittee was formed to draft leadership guidelines for club trips
4. Mike Miller volunteered to organize a club directory listing members interests
5. Discussed an MCA hot-line to inform members of unannounced trips
6. Voted to purchase a tape recorder for the secretary
7. Voted to purchase a tote bag to protect the slide screen

II. OLD BUSINESS

None.

III. NEW BUSINESS

None.

IV. ANNOUNCEMENTS

- A. Ed Bovy thanked the club for purchasing the Northern Lights Calendar. All of our purchases raised \$150 for the club.
- B. Mark Findaly regretted to inform the club that Liz Robinson had recently passed away from a heart attack. Many of us will remember her many contributions to the club, including many good book reviews published in the Scree. Our sympathy goes out to her husband, Al.
- C. Ice Climbing Festival  
Willy Hersman announced the annual American Alpine Club event. (See article this issue.)
- D. Flattop Sleepout  
Willy Hersman announced the solstice sleepout for December 20th.
- E. Mooswa Peak  
Willy Hersman announced a trip to this peak on the Kenai Peninsula for January 10-11.
- F. Ski Trip  
Rick Maron announced a ski trip to Good Hope Creek on December 21.
- G. Avalanche Beacon Practice  
Rick Maron announced a practice session at East High Soccer Field on January 8th at 7 pm. Avalanche beacons required. Contact Rick 338-6969.

V. MAIL

Trail and Timberline, Sierra Club, Alpine Sports, Auckland Mountain Club, Heritage Newsletter, Dept. of the Interior's decisions on Geographic Names and public notice of proposed easements on land to Doyon.

Thanks Dan O'Haire for your Harding Icefield slide show.

Respectfully Submitted,  
Marcy Baker

ADZE

For Sale: Rottofella Telemark Bindings  
Never taken out of the box  
\$25.00  
Steve Shamburek 271-5523 w  
274-5688 h

UPCOMING TRIPS

January CROSS COUNTRY SKI CLASSES  
28 These classes are intended for the beginner skier interested in touring in set tracks or the backcountry. Techniques of waxing, skiing the flats, the uphill and the downhill will be covered. We will meet for several consecutive Wednesdays starting January 28th at 7:00 pm in the chalet at Russian Jack Springs Park. You will need skis, poles, boots and warm clothing. If you need more information or would like to help teach this class please call Mark Findlay at 337-8666.

February SNOW SHELTER SCHOOL  
28 Saturday and Sunday; tentative dates. Overnight ski trip. Learn  
March 1 how to make snow caves, igloos, trenches, etc. Don't forget your headlamp, snow saw, and shovel, if you have them.  
Instructors: Mike Miller, Dave Pahlke, Willy Hersman.  
Call Mike 345-5718.

TRIP REPORTS

Near Point, Near Perfect

It was one of those weekends. You know, the only good skiing was in Hatcher Pass and everybody and forty of their friends were up there. The crusty snow on the mountaintops around here looked suspicious and the trails around the Chugach were in that in-between state of too icy for hiking and not enough snow for skiing. Still, not to be done in, I got out my list of hiking buddies and proceeded with the weekly nag-a-hike calls. --And it worked!

Sunday morning, before it was light, four of us headed out of the Prospect Heights parking lot for the top of Near Point. The shining half-moon and the snow on the trail made for easy visibility, and in the 4-degree temperature the snow made that wonderful squeaky sound under our boots. The trail was coated in ice in many spots and we were thankful for the half inch of snow on top. Below us the lights of Anchorage twinkled, above us two coyotes yipped and howled across a valley at each other. We saw five moose, two Pine Grosbeak, two Bohemian Waxwing, and a Northern Goshawk. Tracks were everywhere - moose, snowshoe hare, ptarmigan, squirrel and there were miles of mouse tracks criss-crossing the trail up to Near Point. The sun beat us to the top by only ten minutes. It was a great clear day and we could see Denali, Redoubt and Iliamna.

It was one of those hikes when everything came together just right. Weather, friends, wildlife and mountain - all were right on. Certainly the Mountain Spirit was out that day and we went out and found it. When we got back to the parking lot we left with more energy and excitement than when we had started - but then, I guess that's what it's all about anyway.

Those friends with me who really don't need to be nagged at all, but just want to know when and where to meet were Linda White, Mary Savage and Doris Curtis.

Kathy Burke

#### Mint Crapper

I would like to thank the following people who helped haul a new outhouse to the Mint Hut on the weekend of January 2-4: Rick Maron, Tim Neale, Mike Miller, Dan O'Haire, Jim Pommert, Steve Brown, Ron Van Bergeyk, Doris Curtis, Marcia Bandy and Sylvia Lane. Somehow we grunted the ugly thing up Heartbreak Hill so that others will be able to do their grunting away from the hut. Installation will take place sometime in early summer. So, if you happen to go up there before that leave the ugly thing alone or perhaps put a rock or two on it to keep the wind from blowing the pieces away. Special thanks to Dave Pahlke who did most of the pre-fabbing work.

The hut is still in pretty good shape, but will need aluminum or chicken wire to discourage hungry porcupines who stand on their hind legs on the spring snowbanks to dine at leisure. Also, it appears that users often fail to bring in enough fuel on their outings to cook and burn the lanterns. Please leave behind all your extra fuel in the gallon cans.

Our group arrived at the hut one day behind another who had been camped close to the hut for New Year's. Some vandalism had occurred during their stay, which they have promised to rectify. In the 15 years that the hut has existed this has not been a problem very much but times do change don't they? It has been suggested that the MCA contact other outdoor groups in our area with a list of hut courtesies and a request that we be contacted whenever non-MCAers plan to use the hut. The MCA has always had an open-door policy for its huts. We have invested much money and toil in the past. I hope we don't have to invest in a lock.

Willy Hersman

## Fifth Annual Valdez Ice-Climbing Festival

Sponsored by the Alaska Section of the American Alpine Club, and by the Valdez Alpine Club, the 1987 Ice-Climbing Festival will be held on the Washington's Birthday Weekend, Saturday through Monday, February 14-15-16. The festival is an occasion when ice-climbers from all over Alaska gather, along with some out-of-state and foreign climbers. Past years have seen visits by Japanese, Austrians, Canadians and New Zealanders as well as those from Kentucky, Arizona and elsewhere. Floorspace, and use of kitchens and bathrooms is available in the homes of several local residents, though there are motels available as well. During the weekend, climbing slide shows, films, and videos are shown, and a potluck spaghetti dinner is traditional on Saturday evening.

More than 160 routes have been climbed, so far, in or near the city limits, all of ranges of difficulty from the easiest to several of the harder routes anywhere. Several are longer than 600', and there are new route possibilities. A guidebook is in the final stages of preparation. Cross-country skiing is also available.

No registration is required. Those hoping to stay with local climbers should call in advance as space is limited. Local contacts are Drs. Andy Embick and Kathy Todd (835-4200), John and Karen Weiland (835-2626), Bob Shelton (835-5127), and Brian Teale (835-5182). For motel reservations, contact the Village Inn (835-4445). In Anchorage, for ride-sharing arrangements call Section Chairman Charlie Sassara (344-8204).

Andrew Embick M.D.  
Festival Chairman

### Trail Damage

During the October floods several trails were damaged making for tricky footing if not even dangerous travel. Damage was caused by washouts, erosion, sliding and downed trees.

Lost Lake - the first two miles suffered heavy water damage.

Resurrection River - 1000 feet washed out by Martin Creek.

Devil's Pass - in the first quarter-mile of the trail 1000 feet washed away. The bridge across Quartz Creek was damaged and tilted.

Upper Russian Lake and Cooper Lake - in the first half-mile of the Cooper Lake Trailhead the bridge is damaged and unsafe.

Carter Lake - in the first half-mile of the trail water run-off has made 3-ft. deep ruts along the trail.

Trees are down across the Resurrection Pass Trail, Resurrection River Trail, Lost Lake Trail and the southern end of the Johnson Pass Trail.

The Forest Service is posting signs on the damaged trails. Trail crews will begin rebuilding the trails this summer. This might be a good project to offer some MCA help.

Kathy Burke

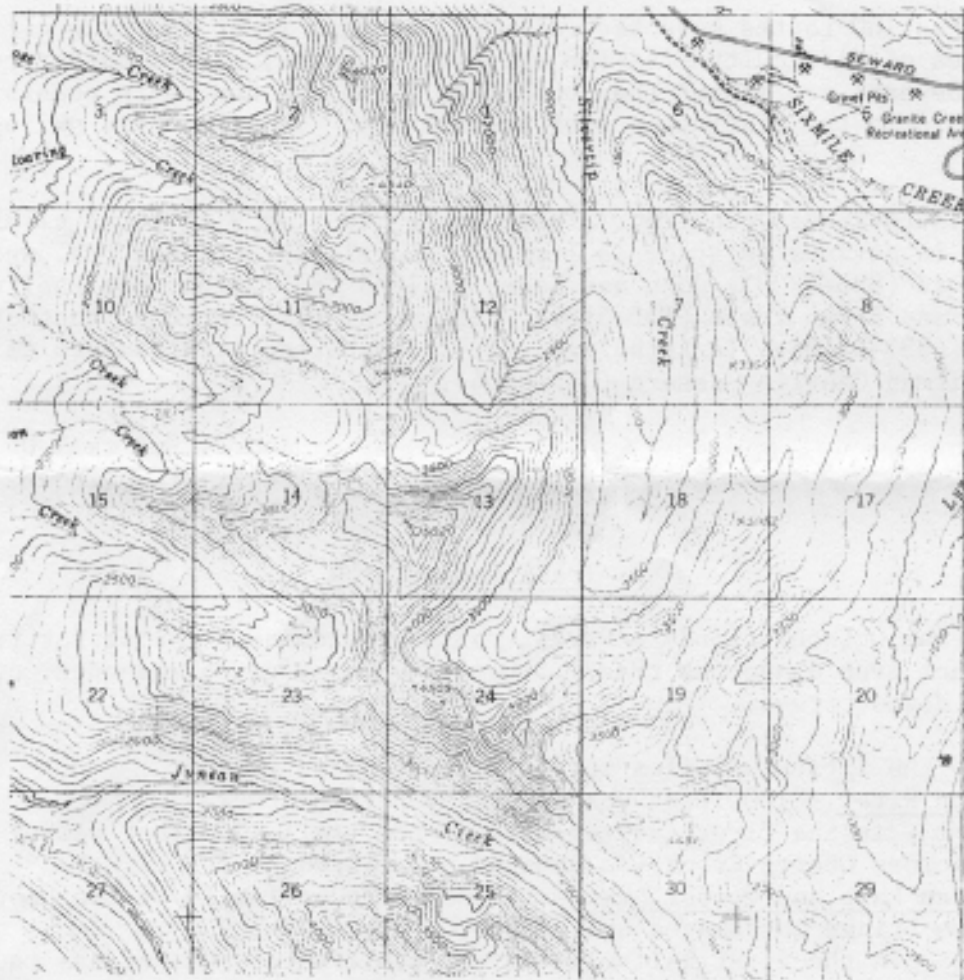
### Trail Improvements

Chugach State Park has built bridges over all the larger creek crossings on the Indian Valley Trail. Now some of us old timers can tell all the new "whippersnapper hikers" tales of the olden days when we sloshed through one or eight of those streams. Thanks Chugach State Park - a great improvement.

Kathy Burke

### MAP TRIVIA

Answer to December's question:  
Mt. Elliott 4710' and Koktoya 5150'



This is from the Seward C-7 map.  
What is the 5020' peak in Section 13?