



MOUNTAINEERING CLUB OF ALASKA

BOX 2037

ANCHORAGE, ALASKA 99510

JULY 1987

Volume 30, Issue 07

### JULY MEETING

The meeting will be held Wednesday, July 15th at 7:30 pm at the Pioneer Schoolhouse, Third and Eagle Sts., downtown Anchorage. After the business meeting Ken Zafren will show slides of climbing in Peru and Bolivia.

### MINUTES FOR THE JUNE MEETING

The meeting was held June 20th on the cloudy summit of Flattop. Meeting called to order by the President at 8:00 pm. A few guests were welcomed.

#### I. COMMITTEE REPORTS

##### A. Hiking and Climbing

Not many people signed up for trips at the meeting, probably due to the recent streak of bad weather. Bill Wakeland announced two cancelations. More people are needed for the Harding Icefield trip, Dan O'Haire will do a shorter version if he doesn't get enough people.

##### B. Huts

We'll probably do work on the Mint Hut outhouse in early August. The roof of Pichler's needs aluminum, and the roof of the Eagle Hut needs to be finished. All this work will be done as summer weather allows without prior announcement in the Scree. Check the club hotline.

#### II. OLD BUSINESS

##### A. Polish Invitation

Was sent off to Warsaw; no answer yet. They were invited to come anytime between April 15 and August 15, 1988.

##### B. Soltice Sleepouts

Some reminiscing was done for the 20-year history of the tradition. Bill Wakeland and John Nevin gave an account of the big bash of 1978, Pete Sennhauser talked a little about the year Ray Genet came up. Willy Hersman gave a little history from the old Screes. Tom Meacham had gone back the farthest...to his first MCA sleepout in 1968.

III. ANNOUNCEMENTS

A. ACC Schedule for the Summer

In order to avoid possible conflicts with members, Todd Miner advised us that his ACC classes will be in the following areas at the following times

June 27-29	Eklutna Glacier
June 29-July 4	Eklutna Traverse
July 11-12	Crow Pass
July 18-19	Fern Mine
July 25-26	Cantata Pk.
Aug. 1	Byron
Aug. 7-11	Mint Glacier

After the short meeting there was a kite contest. Prizes were awarded to Chuck Mobraten (highest flight) and Dave Mobraten (best design), who were given gift certificates to AMH. 55 people showed up for the solstice which, for a change, did not have high winds, but alas had no sunshine either. A nice article appeared in the Daily News the following Monday by Lew Freedman. All in all it was a pretty typical Flattop Sleepout with old timers, new timers and good timers.

Somewhat Respectfully Submitted,  
Willy

\*\*\*\*\*  
 THANKS goes to Jim Pommert for being the Hiking Chairman for the past 3 years; Jim is being transferred out of state. The MCA has been fortunate to have had so many good hiking chairpeople in the past, Jim was no exception. He'll be missed by many of us. Kathy Burke will donate her time to see that the committee keeps running ahead. Best of luck to you Jim (or as they sometimes say "break a leg"). Come back and vist again someday.  
 \*\*\*\*\*

Joy Riders

As club members were enjoying their annual event up on the summit somebody got a little crazy down at the base of Flattop and grabbed the D3 Cat which was parked at the trailhead. They proceeded up the trail to the tundra and cut several "donuts" and made a real mess of things, doing permanent damage to the fragile tundra. The Park Service is looking for whoever did it. If you were up there between the hours of about midnight and eight in the morning and noticed anyone doing this, please call Ranger Mike Goodwin at 345-5014.

## TRIP REPORTS

### The Standard Route Revisited

Having just returned from Denali's West Buttress, Willy Hersman's article on the standard route on Foraker struck a resonant note. Although the West Buttress generally requires only stamina and good weather to complete, the potential for disaster is ever-present.

Crevasse falls, sudden storms and avalanche hazards may take the unlucky or ill-prepared by surprise. Higher up the altitude and cold magnify errors in judgement and accidents.

Many have reached Denali's summit under benign conditions, and they tend to call the peak a "walk up." However, just as many are turned back, and their stories of hardship are equally true. In our time amongst the mountains we should remember: The Goddess may smile, but She is not always kind.

Greg Higgins

### Surveying the Talkeetnas

While fossil hunting in the Talkeetna Mountains in May we were overcome with peak fever and found ourselves going for a summit. We had been working our way up a ravine, treading on old snow from avalanches, when we got to a fork and a continuous, tundra-carpeted slope to the top of Syncline Mountain. So it was a little more than an hour later that Ken Farmer and I found ourselves on the middle of the long, gently rounded summit ridge and one of three summits. The Chugach Mountains lay to the south, half covered with snow and ice. To the north we surveyed the eastern Talkeetnas with their near-horizontal layers of sedimentary rocks. My feet were cold in my sneakers so after a short time we retraced our steps and left the mountain.

Dan O'Haire

### Eagle Lake 11 1/2 Miles Round Trip...Oh, Sure!

or

Stumble - Tumble - Grumble

Remember that Saturday when you woke up to the wettest, rainiest day so far this summer? Well, probably by the time most of you were hiking to the bathroom, there were nine of us already on the trail (did I say trail?) hiking to Eagle and Symphony Lakes. We found the valley dry, with clouds higher than the mountain tops and a gentle breeze to keep the bugs away. Yes, we did catch a couple of sprinkles and there was one pretty windy rest stop, but that was just the mountain spirits reminding us who owned the valley.

So, where's the stumble, tumble, grumble? The first part of the trail (did I say trail?) is marked with orange survey tape on trees, bushes, the ground. This is to keep you off private property. It works fine for about 1 1/2 miles, after that the tagger had too many pina coladas. The tags were never quite

where we were. After they ran out we found ourselves hiking through knee-high brush, shoulder-high willows and very spongy tundra. We just followed one game trail till it petered out to the next game trail. A ground squirrel trail was a four-lane highway. The valley floor was dotted with Starflowers, Nagoonberry, Tundra Rose, Labrador Tea, Bog Rosemary, Spring Beauty, Corydalis, Violets, Arctic Bell Heather, Northern Anemones, Chiming Bells, Lupine, Moss Campion, Bunch Berry, Arctic Azalea and Roseroot.

We couldn't find a good stream crossing and this put us crossing the boulder field at its widest part. Linda would have hiked to Homer if that meant avoiding a wet crossing! When we got on to the boulder field (I mean this is no dinky moraine this was a Boulder Field) all we could see were boulders up to the bottom of the mountain. We had the feeling of being somewhere in the twilight zone--do do do do. Joan told us of her previous bouldering technique which consisted of falling on her front and breaking her glasses; after a little practice I became an expert on this technique.

Eagle and Symphony Lakes were beautiful. Eagle is such a deep aqua green color. Dall sheep grazed across the slopes and there was fresh snow on the peaks surrounding the lakes. There is a hex-shaped wooden structure between the lakes which sheltered us from the wind while we ate lunch. Lunch stops are always educational. Marty is a hopeless peanut butter addict and Sharon told him that not only is it nutritious but also carcinogenic. Marty just grinned and squeezed another mouthful. Half the group took an aspirin at lunch and I became concerned about an all out mutiny. In fact Jane's pains went away so fast we were concerned about her becoming an Advil addict. Doris and I almost got into a brawl when she tried to take away the map before I finished with it.

Going back out the valley we found an easier route. We stayed higher on the mountainsides, coming out and that was better. A Golden Eagle and Falcon soared above us and ground squirrels barked below. Near the end of the trail it was like an Easter egg hunt to find the flagging. We didn't hike out on the ridge as planned, but we sure hiked all up and down the side of it.

Well, we all got out fine and the trailhead (did I say trail?) sure looked good. Usually I can just relax and savor the memories of a hike, but there were two people on the hike that were of the legal profession and I keep expecting to find a notice in the mail informing me that I'm being sued by the participants for physical cruelty.

Those who hiked to the lakes and not the bathroom were: Linda White, Doris Curtis, Jane Stammen, Mary Savage, Susie Hartigan, Sharon Meacham, Marty Bassett, Joan Katz and Kathy Burke. Kathy Burke

#### HIKING AND CLIMBING SCHEDULE

July 11-12      GLEN ALPS-INDIAN  
16 miles, 2000' elev. gain, Class C. One way trip via Ship Lake  
55 Ways #27 and #31. Call for details and sign-up.  
Leader: Don Hansen 279-0829

- 18-25      HARDING ICEFIELD TRAVERSE  
4th annual ski traverse of the icefield from Tustamena Lake to Exit Glacier. Small fee for motorboat to cross the lake. Class: TECHNICAL (glacier travel skills) Call Dan for details. Leader: Dan O'Haire 338-5132
- 25            TURNAGAIN PASS RIDGE  
10 miles, 2000' elev. gain, Class B. A relatively flat ridge traverse above Turnagain Pass. Call for details and sign-up. Leader: Rick Maron 338-6969
- 25-26       CASTLE MT. AREA  
Hike in the Talkeetnas. Class B. Call for details and sign-up. Leader: John Lohff 276-8514
- ?            EAGLE HUT  
Go up via Goat Mt. to finish the roof and go climbing and/or skiing afterwards. Check MCA Hotline in early to mid-July.
- ?            PICHLER'S PERCH  
There's a possibility of a work party going up to put aluminum on the roof (aluminum would be air-dropped). Check the MCA Hotline in mid to late July.
- Aug. 1-2    INDIANHOUSE MT.  
6 miles, 4000' elev. gain, Class E. Call for details & sign-up. Leader: Sylvia Lane 688-2507 or 786-3326
- ?            MINT HUT  
To finish outhouse and go climbing afterwards. Check the MCA Hotline in early August.
- 8            SUMMIT MT.  
4 miles, 4000' elev. gain, Class E. Great trip to learn basic glacier travel and mountain scrambling with some exposure. Call for details and sign-up. Leader: Ron Van Bergeyk 345-1800
- 15           CRESCENT LAKE  
13 miles, 900' elev. gain, Class C. Grayling fishing along the way. Call for details and sign-up. Leader: Don Hansen 279-0829
- 21           MCA PICNIC  
Friday night at the park strip downtown. Exact time not set yet Bernie will need help with buying groceries and setting things up, so give her a call. Coordinator: Bernie Helms 243-3124
- Sept. 5-7   LOST LAKE  
Labor Day Weekend. Leader: Marty Bassett 694-3917

## TRIP CLASSIFICATIONS

The classifications below do not consider individual trip hazards such as river crossings, scree slopes, snow fields, bears, etc. Trip leaders are required to inform the trip participants of any such hazards either verbally, on the sign-up sheet, or in the trip description. Leader approval is required for all trips.

**NON-TECHNICAL:** Following are a few standards used to classify non-technical trips. The classification is made in terms of hiking distance and altitude gain. Many trips are not on established trails.

**CLASS A:** Easy hikes with a maximum distance of 8 miles for day trips or 4 miles per day for overnight trips. Altitude gain up to 1200 feet.

**CLASS B:** Trips involving a maximum distance of up to 12 miles for a day hike or 6 miles per day for an overnight trip. Altitude gain of 1200 to 2500 feet.

**CLASS C:** Trips up to 15 miles for a day hike or 8 miles per day for an overnight trip. Altitude gain up to 3500 feet. Scree, steep grass, or other rough terrain problems may be encountered.

**CLASS D:** Hikes and climbs with an altitude gain of over 3500 feet or a distance of greater than 15 miles for a day hike or greater than 8 miles per day for an overnight trip. Peaks in this classification may require minimal climbing skills.

**CLASS E:** Hazardous climbing conditions may be encountered. A Basic Mountaineering Course may be required.

**TECHNICAL:** Technical trips are open to all qualified climbers. However, the registration on any particular trip must be restricted to a safe and manageable number of climbers. Registration is made directly with the leader who determines the qualifications needed for the trip.

**TRIP PARTICIPANTS** have the obligation to acquaint themselves with the nature of the trip and to verify that it is within their capability and experience. Anyone wishing to participate in any trip above CLASS A must have completed one or more trips of the next lower classification, or the equivalent.

Approved by MCA Board, March 1987

## Climbing Notes

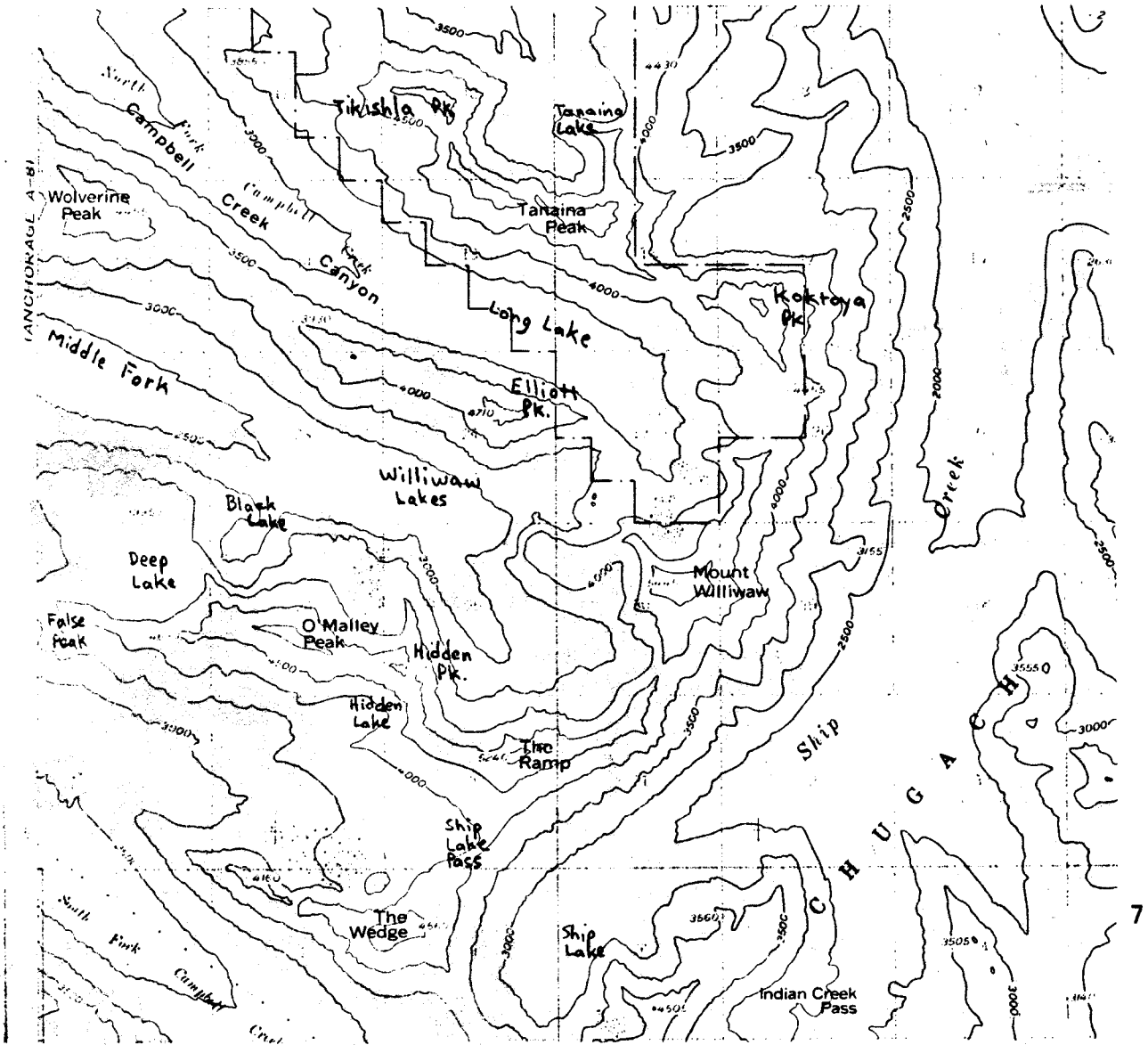
In April of this year, when the weather was more stable than it is now, Geoff Radford and company made the third ascent of the west face of Mt. Deborah. It was first done in May 1981 (Cannard, Simenson, Tejas, Powder), and again two weeks later (Gee, Wisdom).

At the end of June, according to Denali National Park statistics, the success rate in 1987 on the mountain is 31%.

## Geographic Names

A recent decision by the Board of Geographic Names has given us another name to put on your Tyonek Quad maps near Mt. Spurr. CRATER PEAK GLACIER is now the glacier on the west slope of Crater Peak which trends SSE to Chakachatna River. Willy Hersman

## Map Trivia



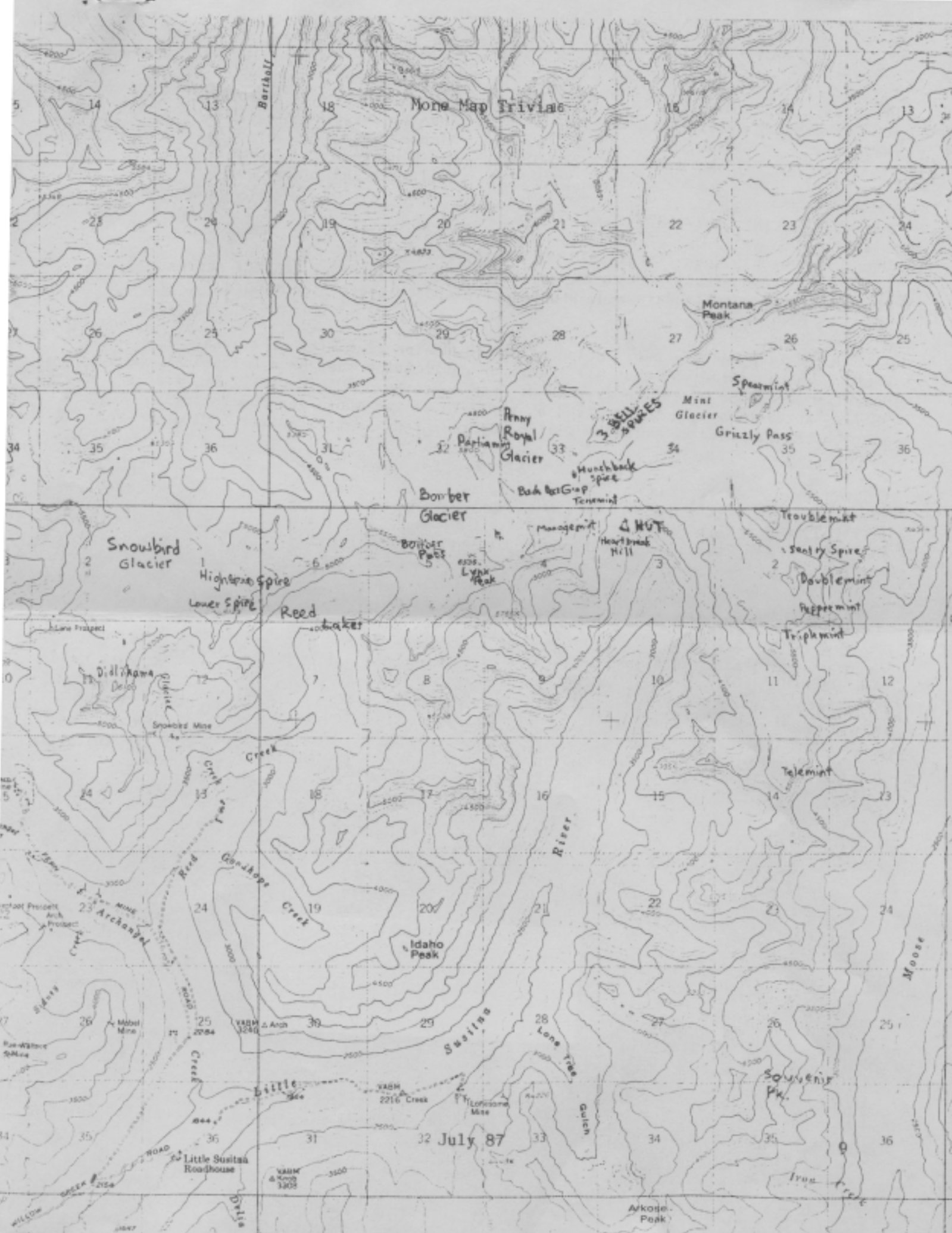
## History Corner

As Vice-President and chairman for programs, I thought it might be sort of interesting to take a look back at the 29 years' worth of slide shows, films and programs.

The following is a general survey of MCA programs since 1958. As you might expect, ignoring films, Mt. McKinley tops the list. (That's why everyone yawns at West Butt. slides.) The most interesting programs were when Brad Washburn came to talk and when we held a dinner in honor of Eric Shipton. Also in the past there were more programs on mountain safety and gear. Swaps didn't begin until 1977. General interest slides were mainly an excuse for not having a show set up. There was one slide show which didn't have slides at all...just photos that were 4x6 or bigger.

Africa - 2	Katmai - 3
Alps - 6	Kayaking - 5
Antarctica - 3	Kichatna Spires - 3
Avalanche Awareness - 5	Kodiak - 1
Abominable Snowman - 1	Local climbs - 5
Aerial Photos - 1	Little Switzerland - 2
Brooks Range - 11	Lake Clark - 1
Blackburn - 1	McKinley - 18
Bugaboos - 3	Middle East - 1
Civil Air Patrol - 1	Marcus Baker - 2
Chilkoot Trail - 6	Mountain safety - 8
Climbing Gear - 6	North Slope - 1
Caves - 2	New Zealand - 2
Canyon Trips - 3	Pribilofs - 1
Continental Divide - 1	Peril Pk. - 2
Dall - 1	Patagonia - 3
Deltas - 7	Park proposals - 5
Drum - 3	Pacific crest - 1
Deborah - 2	Rockies - 4
Dinner to honor - 1	Redoubt - 1
Eklutna Traverse - 6	Russell - 3
El Capitan - 2	Ruth Gl. - 4
Films - 34	Rock Shelters - 1
Foraker - 3	Rainier - 1
Fifty state summits - 1	Spurr - 6
Fairweather - 1	St. Augustine - 1
General interest slides - 16	St. Elias Range - 8
Greenland - 2	Swaps - 11
Glaciology, geology - 4	South America - 4
Gerdine - 3	Sumdum - 1
Hayes - 2	Silverthrone - 1
Himalayas - 13	Tetons - 1
Huts (MCA) - 4	Tusk - 1
Hunter - 3	Talkeetna climbs - 1
Huntington - 1	Torbert - 2
Harding Icefield - 1	Tokoshas - 1
Iliamna - 3	USSR - 3
Ice Climbing - 3	Volcanoes - 1
Ice Cream Cone - 1	Winter olympics - 1
Iditarod - 1	Wrangells - 4
Japan - 1	Washington state climbs - 2
Korea - 1	4 x 6 + photos - 1





Mona Map Trivias

Montana Peak

Anny Royal Glacier

Bomber Glacier

Snowbird Glacier

Bomber Pass

4 HUT

Highline Spire

Reed

Troublemint

Sooty Spire

Doublemint

Peppermint

Telemint

Idaho Peak

32 July 87

Souvenir Pk.

Aykoose Peak